



# Training Catalog

# Training Pricing Sheet

<b>Quick-Start Webinars</b>	FREE	REGISTER <a href="#">HERE</a>
<b>Train the Trainer Webinars</b>	FREE	REGISTER <a href="#">HERE</a>
<b>Special Topic Webinars</b>	FREE	REGISTER <a href="#">HERE</a>
<b>Ask an Expert</b>	FREE	REGISTER <a href="#">HERE</a>
<b>On-Demand Training Videos</b>	FREE	VIEW <a href="#">HERE</a>

<b>Virtual PD Package</b> Full	\$1,200 (four 1-hour virtual sessions) <i>*Scheduled at least 1 week in advance.</i>
<b>Virtual PD Package</b> Lite	\$600 (two 1-hour virtual sessions) <i>*Scheduled at least 1 week in advance.</i>
<b>Virtual Data-Dive</b> ACT® or SAT®	\$500 (one 1-hour virtual session) <i>*Scheduled at least 1 week in advance.</i>
<b>Virtual PD</b> A La Carte	\$300 (one 1-hour virtual session) <i>*Scheduled at least 1 week in advance.</i>

<b>Custom In-Person Training</b>	<b>\$2,500 per 1-day of in-person training</b> <i>*Scheduled at least 2 weeks in advance.</i> <i>*Includes 1 trainer</i> <i>*Discount may be available on the subsequent days of a multiple day training event.</i>
----------------------------------	--

Reach out to [success@progresslearning.com](mailto:success@progresslearning.com) to request a quote for custom training, or [click here](#) to schedule a brief consultation to discuss training options and create a training plan for your school or district.

# Free Quick Start Webinars



## Getting Started for Elementary Teachers (K-5)

[Register](#)

[Play Recording](#)

Learn how to set up classes, create assessments and assignments, and navigate the elementary student dashboard, including K-1 and Liftoff features. Explore key reports to track progress and support student growth.



## Getting Started for Secondary Teachers (6-12)

[Register](#)

[Play Recording](#)

Set up classes, build assessments, and explore the streamlined secondary student dashboard. Get a quick look at Liftoff and key reports to monitor student progress.



## Getting Started with Liftoff (2-8)

[Register](#)

[Play Recording](#)

Explore Liftoff for grades 2-8 and learn how it identifies skill gaps, personalizes learning paths, and integrates with NWEA MAP to eliminate the need for additional diagnostics.



## Getting Started for Administrators

[Register](#)

[Play Recording](#)

Tour the admin portal to manage settings, upload users, access school-wide reports, and create common assessments.

# Free Quick Start Webinars



## Getting Started for ACT®/SAT® Readiness

### TEACHERS

[Register](#)

[Play Recording](#)

Learn how to set up classes, create assessments and assignments, and navigate the elementary student dashboard, including K-1 and Liftoff features. Explore key reports to track progress and support student growth.



## Getting Started for ACT®/SAT® Readiness

### ADMIN

[Register](#)

[Play Recording](#)

Learn how to set up classes, create assessments and assignments, and navigate the elementary student dashboard, including K-1 and Liftoff features. Explore key reports to track progress and support student growth.



# Free Training Resources

## Train the Trainer Webinars



Join this session to become your school's Progress Learning Training Facilitator. During this webinar, you will learn how to effectively train your staff during a staff meeting or PD day.

[Click here](#) to register.

## Special Edition Webinars



Progress Learning's Special Edition Webinars are dynamic, 30-minute sessions designed to engage educators with timely, relevant topics throughout the school year.

[Click here](#) to view topics.

## Ask An Expert Core Curriculum Content



Join this come-and-go session to ask any and all questions about our platform.

This pop-in forum is designed for all educators who use Progress Learning or want to use it MORE in their classroom!

[Click here](#) to register.

## Ask An Expert ACT®/SAT® Readiness



Join this come-and-go session to ask questions and explore how to make the most of PL for ACT®/SAT® Readiness. This session is perfect for all educators supporting postsecondary success.

[Click here](#) to register.

## Help and Support

Click the **Help** button at the top of your dashboard anytime you need support.

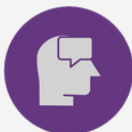
### Contact Us

Send a message directly to our support team. They're quick to respond and ready to help.

### Help Center

Access our full library of support articles and resources. Browse by topic or search by keyword.

## Resource Center



**Toby** is our virtual assistant, located in the bottom right-hand corner of the platform. You can use Toby to share your feedback, view announcements, chat directly with a support team member, access our Help Docs, and explore recent feature releases.

# Free Learning Paths and Teacher Certification

## Become a Certified Progress Learning Teacher!

Explore our self-paced learning paths designed for New Teachers, Returning Teachers, and School Admins—now including ACT®/SAT® Readiness Training.

Once you've completed your path, take a **20-question knowledge check**. Score 80% or higher to earn your official **Progress Learning Certified Teacher** certificate and digital badge, delivered right to your inbox.

### New Teacher Learning Path

[LIVE](#)

[ON-DEMAND](#)

Choose from the links above to join a live or on-demand session specifically tailored for teachers new to Progress Learning. Each includes a 30-minute training, followed by an optional Q&A.

### Returning Teacher Learning Path

[LIVE](#)

[ON-DEMAND](#)

Choose from the links above to join a live or on-demand session for returning teachers already familiar with Progress Learning. Each includes a 30-minute training, followed by an optional Q&A.



### Admin Learning Path

[LIVE](#)

[ON-DEMAND](#)

Choose from the links above to join a live or on-demand session for campus and district administrators. Each includes a 30-minute training, followed by an optional Q&A.

### ACT® and SAT® Readiness Learning Path

[LIVE](#)

[ON-DEMAND](#)

Choose from the links above to join a live or on-demand session to explore essential tools and strategies to guide your students toward ACT® and SAT® Readiness.

# Virtual Professional Development Full Package

## What to Expect with Our Custom Training

- **Training Consultation:** Available upon request to define your goals and build a personalized training plan.
- **Flexible Scheduling:** Choose the day, time, and format that works best for your team.
- **Recording Access:** All virtual sessions are recorded and shared for future reference.
- **Fully Customized:** Each training is tailored to your integrations, state standards, and district or campus goals.
- **Live, Expert-Led Sessions:** Led by Progress Learning experts and designed to support a variety of learning needs.
- **Ongoing Tech Support:** Additional support available to ensure a smooth experience.

### Virtual PD Package – Full \$1,200



#### Details

- Four 60-minute sessions
- Recommended Sessions\*:
  - Getting Started
  - Implementation 101
  - Reports to Results
  - Gear Up for Testing
- Virtual Training
- All training will take place in one school year (by July 31st)

#### Recommendations

- Two 60-minute sessions in the Fall semester
  - Getting Started
  - Implementation 101
- Two 60-minute sessions in the Spring semester
  - Reports to Results
  - Gear Up for Testing

*\*These sessions are suggestions, but you may choose any four sessions from the training menu. This will be customized during your training consultation.*

# Virtual Professional Development Lite Package

## What to Expect with Our Custom Training

- **Training Consultation:** Available upon request to define your goals and build a personalized training plan.
- **Flexible Scheduling:** Choose the day, time, and format that works best for your team.
- **Recording Access:** All virtual sessions are recorded and shared for future reference.
- **Fully Customized:** Each training is tailored to your integrations, state standards, and district or campus goals.
- **Live, Expert-Led Sessions:** Led by Progress Learning experts and designed to support a variety of learning needs.
- **Ongoing Tech Support:** Additional support available to ensure a smooth experience.

### Virtual PD Package – Lite \$600



#### Details

- Two 60-minute sessions
- Recommended Sessions\*:
  - Getting Started
  - Reports to Results
- Virtual Training
- All training will take place in one school year (by July 31st)

*\*These sessions are suggestions, but you may choose any two sessions from the training menu. This will be customized during your training consultation.*



# Virtual Data Dive

## ACT® or SAT®

Join us for a hands-on, personalized training session where we explore your data. In this Data Dive, our team will walk you through your ACT® or SAT® reports in Progress Learning, helping you uncover key trends, highlight areas of strength, and identify opportunities for growth.

You'll gain actionable insights to drive instruction, support students, and make the most of your Progress Learning tools. This is your opportunity to ask questions, dig deeper, and walk away with a clearer understanding of how your data can inform meaningful next steps.



### Data Navigation & Optimization

Leverage Progress Learning's platform to identify trends, compare student groups, and track growth.



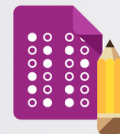
### Practical Strategies for PLCs

Gain hands-on tools and techniques to strengthen your team's data fluency and ability to share insights.



### Live Data Analysis

Analyze your real data with our team to uncover key insights and opportunities.



### Item-Level Analysis

Drill down into assessment items to guide formative instruction and reteaching.

**Virtual Data Dive – ACT® or SAT®**  
**\$500**



### Details

- One 60-minute session
- Virtual Training
- Session is recorded and shared for future reference

# Professional Development

## In-Person Training

### What to Expect with Our Custom Training

- **Training Consultation:** Available upon request to define your goals and build a personalized training plan.
- **Flexible Scheduling:** Choose the day, time, and format that works best for your team.
- **Fully Customized:** Each training is tailored to your integrations, state standards, and district or campus goals.
- **Expert-Led Sessions:** In-person sessions led by Progress Learning experts, designed to support a variety of learning needs.
- **Ongoing Tech Support:** Additional support available to ensure a smooth experience.

### Progress Learning In-Person Training

\$2,500



#### Details

- Includes one trainer for up to one full school day
- Must be scheduled at least 2 weeks in advance
- Discount may be available on the subsequent days of a multiple day training event

# Custom Training Session Menu

This menu is a selection of our most **popular sessions**. You may choose from this list, or you may customize the sessions to the benefit of your teachers.

Please email [training@progresslearning.com](mailto:training@progresslearning.com) to schedule a training consultation to discuss other options.

## **Getting Started With Progress Learning**

In this session, we will provide an overview of the Progress Learning platform. Learn how to manage classes, set student accommodations, and use the assessment and assignment center. Take a tour of the student dashboards with individualized focus areas. Learn where to find instructional resources and a standards mastery report with easy-to-use Quick Click Remediation.

## **Implementation 101**

In this session, we will provide a step-by-step guide for teachers to use Progress Learning with fidelity. Learn how to use Progress Learning daily, measure student progress, remediate, and support. Become a Progress Learning pro!

## **Reports to Results**

Discover Progress Learning's powerful reporting capabilities. In this training, you'll get an overview of the different reports available, with an emphasis on tracking student growth, providing documentation, and using data to drive instruction.

## **Gear Up For Testing**

In this session, you will learn how you can use Progress Learning to gear up for state or EOC/EOG testing and make sure your students are fully prepared for test day.

## **Using Progress Learning Daily**

How can I include Progress Learning in my daily lesson plans? From bell ringers and exit tickets to ongoing formative assessments and daily practice, see how Progress Learning can be used every day.

## **Creating Engaging Lesson Plans**

Did you know that Progress Learning can be incorporated into your lesson plans in multiple ways? From hooks to pre- and post-tests, the possibilities are endless! Learn how you can differentiate lessons in Progress Learning to meet every student where they are.

## **Green Dot Challenge/Galaxy Star Challenge**

Thousands of students across the country have benefited from our Green Dot Challenge and Galaxy Star Challenge. Now it's your turn to join in on the fun! In this webinar, we'll show you ways to make your GDC/GSC engaging and exciting. Learn how to create buy-in among all students, no matter their performance level.

## **Fall 2025 Back-to-School Refresher for New and Returning Teachers**

This session is designed for returning educators and new teachers. We will cover class setup, account clean-up, and key product updates from the past year. We'll also revisit core features and best practices to help you confidently implement Progress Learning from day one.

# Custom ACT®/SAT® Readiness Training Session Menu

This menu makes it easy to explore essential tools and strategies to guide your students toward ACT®/SAT® Readiness. Please email [training@progresslearning.com](mailto:training@progresslearning.com) to schedule a training consultation to discuss other options.

## **Getting Started with Progress Learning for ACT® and SAT® Readiness**

Kickstart your journey with Progress Learning in this introductory session focused on ACT® and SAT® Readiness. We'll guide you through setting up your classes, configuring student accommodations, and assigning the first assessment. Learn best practices for getting started with the platform to ensure a smooth experience as you prepare students for success on the ACT® and SAT®.

## **Exploring Progress Learning: Tools for Instruction & Student Success**

In this session, you'll learn how to use Progress Learning's instructional resources, build custom assessments and assignments, leverage individualized study plans, and tap into powerful reports to guide daily instruction. Let Progress Learning support your efforts to assess, remediate, and foster student growth throughout the year.

## **Master the Assessment Builder: Customizing Your Assessments**

Join us for a hands-on session focused on maximizing the power of the assessment builder tool—specifically for ACT® and SAT® Readiness. In this webinar, you'll learn how to:

- Build custom assessments that align with your instructional goals
- Adjust Depth of Knowledge (DOK) levels to meet students where they are
- Target essential learning objectives by selecting specific standards
- Choose from a wide range of question types to accurately measure student understanding

## **Reports to Results: An Overview of Available ACT® and SAT® Reports**

In this session, we'll show you how to use Progress Learning tools and reports to track student progress, uncover skill gaps, and guide focused preparation for the SAT® and ACT® exams. Learn how to identify trends, recognize common challenges, and prioritize key areas to support student success on college readiness assessments.